



IMO Type Approval

Cruise Ship Interiors & Design
Expo. 2026

Graeme A. Hyde

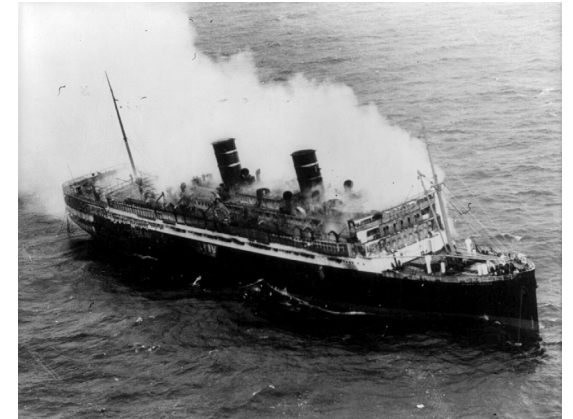


IR

Why is IMO Type Approval Required.



- The SS Morro Castle fire on 8th September 1934 was a significant event that led to the implementation of fire safety measures on cruise ships. The fire resulted in the deaths of 137 passengers and crew, prompting improvements in shipboard fire safety protocols. These measures included the use of Fire-retardant materials, automatic fire doors, and ship-wide fire alarms.



- SS Noronic 16th September 1949 The death toll from the disaster was never precisely determined. Estimates range anywhere from 118 to 139 deaths.
- MS Scandinavian Star had been stricken by other fires throughout its history. 7 April 1990 158 people, or approximately one-third of all passengers on board, died.
- FTP code came into force 1 July 1998 and then latest 2010 FTP code 1st July 2-12 amendments to Chapter II-2 of SOLAS.

What part does Lloyd's Register Play in Type Approval ?



- Lloyd's Register is a Recognised Organization (RO) who is approved by Flag, EU and UK to undertake 3rd party verification of Product to be Type Approved for Marine use.
- We undertake Type Approvals for both Statutory & Class requirements.
- In relation to the Cruise ship market, we are dealing with Statutory requirements mainly SOLAS Chapter II-2 Regulation 2 - Fire safety objectives and functional requirements.

How do we verify Compliance

Compliance to SOLAS requires testing to ensure products, coatings Furniture, etc is suitably Fire resistant and does not produce toxic gases.

This is done to an approved test plan in one of 2 ways.

- Independent IMO approved Test Lab which undertakes the required testing
- Witness of the fire testing by the Recognised Origination (RO) to ensure testing is carried out in accordance with the Test Plan the RO has approved.
- Fire Test facility is expensive and not normally undertaken by the manufacture of products as it requires strict procedures and calibrated facility.

What Materials needs to be IMO Approved ?

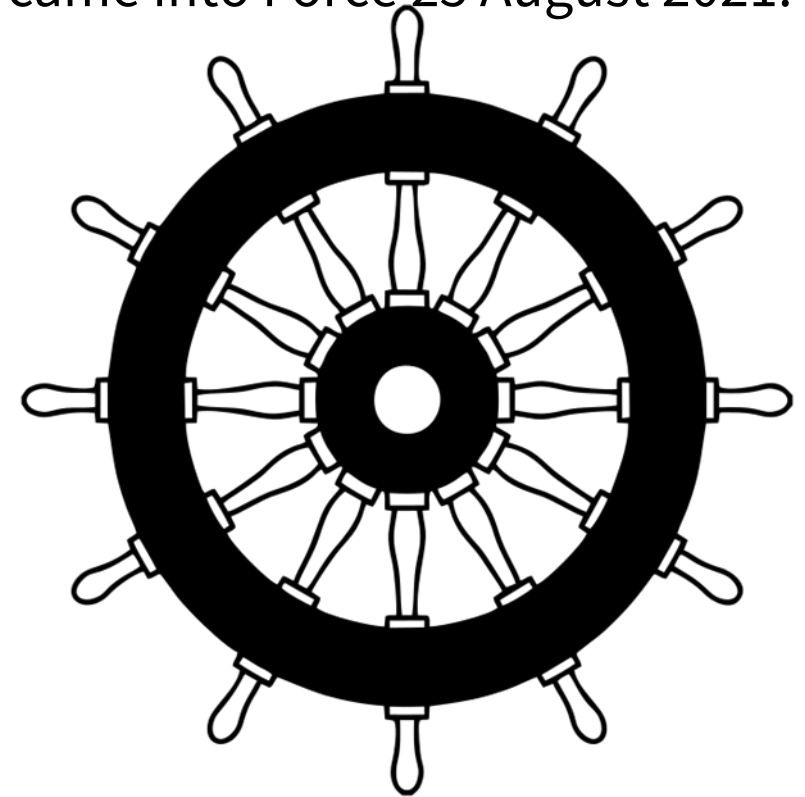


1. Floor & Deck Coverings
 - Primary deck covering and floor coverings are to be considered as defined by 2010 FTP Code Annex 1 Part 5 par. 4.2.
 - For floating floor the same principles applies. Ground and support shall be non-combustible. Anti-damping treatments in rubber may be installed (to be kept to a minimum) in accommodation and public spaces but shall be steel encapsulated in escape corridors and stairway enclosure.
2. Exposed surfaces of walls and ceiling linings, including paints, varnishes, fabrics & veneers
3. Skirting Board
 1. Combustible facings, moldings, decorations
4. Partial Bulkhead .
5. Wall panel & lining, Panel Surfaces, Concealed panel surface.
6. Draught Stops, Grounds & supports, Insulation, Insulation Surface.
7. Curtain and/or suspended textiles, Upholstered furniture (excluding seating).
8. Seating (Sofas & Chairs, upholstered or not), Case furniture (desks, wardrobes, dressing tables, bureaux,), Free standing furniture (tables etc.), Window box surface.
9. GRP surfaces in private Bathroom/Toilet Modules.
10. Bedding components
11. Light fixtures.
12. Waste receptacles
13. Object d'art, planters, paintwork (NEVER TO REDUCE ESCAPE WIDTHS).

Marine European Directive (MED)



- REGULATION (EU) 2021/1158 of 22 June 2021 on design, construction and performance requirements and testing standards for marine equipment and repealing Implementing Regulation (EU) 2020/1170" was published (16 July 2021) It came into Force 25 August 2021.
- Covers the Following Product Types.
 - Life-saving appliances (SOLAS III)
 - Marine pollution prevention equipment (MARPOL)
 - **Fire protection equipment (SOLAS II-2)**
 - Navigation equipment (SOLAS V)
 - Radio-communication equipment (SOLAS IV)
 - COLREG 72 – equipment
 - SOLAS II-1 – equipment



2814/MM/YY

UK requirements and scheme, Impact of Brexit



- United Kingdom departed from the European Union at 23:00 GMT on 31 January 2020.
- This means that Companies under MED Certification who's Authorised Representative was in the UK can not use this person anymore.
- For UK Flagged ships require UK marking from 1 January 2021 To allow businesses time to adjust to the new requirements, Products were still be able to use the MED marking until 1 January 2023 in most cases.
 - From 1 January 2023 products must be marked with new or additional UK MER. To be placed on UK Flagged vessels.
 - Lloyd's Register is a UK Conformity Assessment Body



0038/MM/YY

SOLAS Fire Category Space



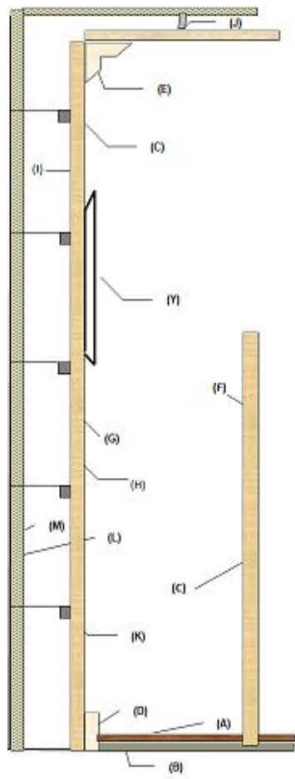
- SOLAS Chapter II-2 Part C Regulation 9 define the requirements for Vertical & Horizontal Zones 1 through 14 for the boundaries
- SOLAS Chapter II-2 Part B Regulation 5 deals with Fire Growth Potential
 - Materials etc to be put into spaces.
- Its Important to understand what products are going into which category of Space
 - Fire Spread properties
 - Toxicity of smoke
 - Hard Products and Soft products such as Textiles, etc.



Passenger Ships >36 px - Materials Matrix in accommodation spaces, service spaces and control stations (applicable for ships built on and after 1 July 2012*)

(to be read in conjunction with MSC/Circ. 1120, Annex, Interpretation of Regulations II-2/3.6.2) & International Code for Application of Fire Test Procedures, 2010 (2010 FTP Code), Annex 3.4.4

Type of Space (the types of spaces listed may not be exhaustive)	Control Stations	Stairway Enclosures	Corridors	Public spaces used as internal muster stations	Cabins, Offices (spaces of minor fire risk)	Cabins, Offices (spaces of moderate fire risk) & Public Space	Public Spaces used as part of the MOE, including reception areas etc.	Public Spaces, Messrooms, Restaurants, Discos, Bars, Ateliers, Beauty Salon, Spa's etc.	Enclosed Pool Areas	Service spaces (Isolated Pantries)	Service spaces (Main pantries, galleys, stores, workshops etc.)	Cabin Balconies
Category of space	1	2	3	4 & 8	6	7	3	8	8 or 9 (see note 13)	9	12,13,14	5
(A) Floor coverings (see note 16 & 17)	Annex 1, Part 2 see note (14)	Annex 1, Part 5 Annex 1, Part 2	Annex 1, Part 5 Annex 1, Part 2	Annex 1, Part 5 Annex 1, Part 2	Annex 1, Part 5 Annex 1, Part 2	Annex 1, Part 5 Annex 1, Part 2	Annex 1, Part 5 Annex 1, Part 2	Annex 1, Part 5 Annex 1, Part 2	Annex 1, Part 2	Annex 1, Part 2	Annex 1, Part 2	Annex 1, Part 5 Annex 1, Part 2 (see note 11)
(B) Primary deck coverings (see note 16 & 17)	Annex 1, Part 5 Annex 1, Part 2	Annex 1, Part 5 Annex 1, Part 2	Annex 1, Part 5 Annex 1, Part 2	Annex 1, Part 5 Annex 1, Part 2	Annex 1, Part 5 Annex 1, Part 2	Annex 1, Part 5 Annex 1, Part 2	Annex 1, Part 5 Annex 1, Part 2	Annex 1, Part 5 Annex 1, Part 2	Annex 1, Part 5 Annex 1, Part 2	Annex 1, Part 5 Annex 1, Part 2	Annex 1, Part 5 Annex 1, Part 2	Annex 1, Part 5 Annex 1, Part 2
(C) Exposed surfaces of walls and ceiling linings, including paints, varnishes, fabrics & veneers	Annex 1, Part 2 (Fire volume calc.) see note (8)	Annex 1, Part 2 (Fire volume calc.)	Annex 1, Part 2 (Fire volume calc.)	Annex 1, Part 2 (Fire volume calc.)	Annex 1, Part 2 (Fire volume calc.)	Annex 1, Part 2 (Fire volume calc.)	Annex 1, Part 2 (Fire volume calc.)	Annex 1, Part 2 (Fire volume calc.)	Annex 1, Part 2 (Fire volume calc.)	Annex 1, Part 2 (Fire volume calc.)	Annex 1, Part 2 (Fire volume calc.)	Annex 1, Part 2 (Fire volume calc.)
(D) Skirting Board	(Fire volume calc.) see note (8)	(Fire volume calc.)	(Fire volume calc.)	(Fire volume calc.)	(Fire volume calc.)	(Fire volume calc.)	(Fire volume calc.)	(Fire volume calc.)	(Fire volume calc.)	(Fire volume calc.)	(Fire volume calc.)	No applicable requirements
(E) Combustible facings, mouldings, decorations	Annex 1, Part 5 (Fire volume calc.) see notes (8) & (9)	Annex 1, Part 5 (Fire volume calc.) see note (9)	Annex 1, Part 5 (Fire volume calc.) see note (9)	Annex 1, Part 5 (Fire volume calc.) see note (9)	Annex 1, Part 5 (Fire volume calc.) see note (9)	Annex 1, Part 5 (Fire volume calc.) see note (9)	Annex 1, Part 5 (Fire volume calc.) see note (9)	Annex 1, Part 5 (Fire volume calc.) see note (9)	Annex 1, Part 5 (Fire volume calc.) see note (9)	Annex 1, Part 5 (Fire volume calc.) see note (9)	Annex 1, Part 5 (Fire volume calc.) see note (9)	Annex 1, Part 5 (Fire volume calc.) see note (9)
(F) Partial Bulkhead	Annex 1, Part 1	Annex 1, Part 1	Annex 1, Part 1	Annex 1, Part 1	Annex 1, Part 1	Annex 1, Part 1	Annex 1, Part 1	Annex 1, Part 1	Annex 1, Part 1	Annex 1, Part 1	Annex 1, Part 1	Annex 1, Part 1
(G) Wall panel & lining	Annex 1, Part 1	Annex 1, Part 1	Annex 1, Part 1	Annex 1, Part 1	Annex 1, Part 1	Annex 1, Part 1	Annex 1, Part 1	Annex 1, Part 1	Annex 1, Part 1	Annex 1, Part 1	Annex 1, Part 1	Annex 1, Part 5 Annex 1, Part 2 (see note 10)
(H) Panel surface	Annex 1, Part 5 Annex 1, Part 2 (Fire volume calc.) see note (8)	Annex 1, Part 2 (Fire volume calc.)	Annex 1, Part 2 (Fire volume calc.)	Annex 1, Part 2 (Fire volume calc.)	Annex 1, Part 2 (Fire volume calc.)	Annex 1, Part 2 (Fire volume calc.)	Annex 1, Part 2 (Fire volume calc.)	Annex 1, Part 2 (Fire volume calc.)	Annex 1, Part 2 (Fire volume calc.)	Annex 1, Part 2 (Fire volume calc.)	Annex 1, Part 2 (Fire volume calc.)	Annex 1, Part 5 Annex 1, Part 2 (Fire volume calc.)
(I) Concealed panel surface	Annex 1, Part 5	Annex 1, Part 5	Annex 1, Part 5	Annex 1, Part 5	Annex 1, Part 5	Annex 1, Part 5	Annex 1, Part 5	Annex 1, Part 5	Annex 1, Part 5	Annex 1, Part 5	Annex 1, Part 5	Not applicable
(J) Draught stops	Annex 1, Part 1	Annex 1, Part 1	Annex 1, Part 1	Annex 1, Part 1	Annex 1, Part 1	Annex 1, Part 1	Annex 1, Part 1	Annex 1, Part 1	Annex 1, Part 1	Annex 1, Part 1	Annex 1, Part 1	Not applicable
(K) Grounds & supports	Annex 1, Part 1	Annex 1, Part 1	Annex 1, Part 1	Annex 1, Part 1	Annex 1, Part 1	Annex 1, Part 1	Annex 1, Part 1	Annex 1, Part 1	Annex 1, Part 1	Annex 1, Part 1	Annex 1, Part 1	Annex 1, Part 1
(L) Insulation	Annex 1, Part 1	Annex 1, Part 1	Annex 1, Part 1	Annex 1, Part 1	Annex 1, Part 1	Annex 1, Part 1	Annex 1, Part 1	Annex 1, Part 1	Annex 1, Part 1	Annex 1, Part 1	Annex 1, Part 1	Annex 1, Part 1
(M) Insulation surface	Annex 1, Part 5	Annex 1, Part 5	Annex 1, Part 5	Annex 1, Part 5	Annex 1, Part 5	Annex 1, Part 5	Annex 1, Part 5	Annex 1, Part 5	Annex 1, Part 5	Annex 1, Part 5	Annex 1, Part 5	Annex 1, Part 5
(N) Curtain and/or suspended textiles	Annex 1, Part 7	Annex 1, Part 7	Annex 1, Part 7	No applicable requirements	Annex 1, Part 7	No applicable requirements - see note (19)	Annex 1, Part 7 see note (3)	No applicable requirements	Annex 1, Part 7 see note (3)	Annex 1, Part 7 see note (3)	No applicable requirements	Annex 1, Part 7 see note (12)
(P) Upholstered furniture (excluding seating)	see note (8)	Not allowed	Not allowed	No applicable requirements	Annex 1, Part 8	No applicable requirements - see note (19)	Annex 1, Part 8 see notes (3) & (7)	No applicable requirements	depending on category (8) or (9)	see notes (6) & (7)	No applicable requirements	Annex 1, Part 8 see note (12)
(Q) Seating (Sofas & Chairs, upholstered or not)	see note (8)	see notes (2) & (7) Annex 1, Part 8	Not allowed	No applicable requirements	see note (7) Annex 1, Part 8	No applicable requirements - see note (19)	see notes (3) & (7) Annex 1, Part 8	No applicable requirements	depending on category (8) or (9)	see notes (6) & (7)	No applicable requirements	Annex 1, Part 8 see note (12)
(R) Case furniture (desks, wardrobes, dressing tables, bureaux, etc.)	see note (8)	Not allowed	Not allowed	No applicable requirements	see note (6)	No applicable requirements - see note (19)	see notes (3) & (6)	No applicable requirements	depending on category (8) or (9)	see notes (6) & (7)	No applicable requirements	see note (12)
(S) Free standing furniture (tables etc.)	see note (8)	Not allowed	Not allowed	No applicable requirements	see note (7)	No applicable requirements - see note (19)	see notes (3) & (7)	No applicable requirements	depending on category (8) or (9)	see notes (6) & (7)	No applicable requirements	see note (12)
(T) Window box surface	Annex 1, Part 5 Annex 1, Part 2 (if applicable) (see note 4)	Annex 1, Part 5 Annex 1, Part 2 (if applicable) (see note 4)	Annex 1, Part 5 Annex 1, Part 2 (if applicable) (see note 4)	Annex 1, Part 5 Annex 1, Part 2 (if applicable) (see note 4)	Annex 1, Part 5 Annex 1, Part 2 (if applicable) (see note 1 & 4)	Annex 1, Part 5 Annex 1, Part 2 (if applicable) (see note 1 & 4)	Annex 1, Part 5 Annex 1, Part 2 (if applicable) (see note 4)	Annex 1, Part 5 Annex 1, Part 2 (if applicable) (see note 4)	Annex 1, Part 5 Annex 1, Part 2 (if applicable) (see note 4)	Annex 1, Part 5 Annex 1, Part 2 (if applicable) (see note 4)	Annex 1, Part 5 Annex 1, Part 2 (if applicable) (see note 4)	Annex 1, Part 5 Annex 1, Part 2 (if applicable) (see note 4)
(U) GRP surfaces in private Bathroom/Toilet Modules	No applicable requirements	No applicable requirements	No applicable requirements	No applicable requirements	Annex 1, Part 5 Annex 1, Part 2	Annex 1, Part 5 Annex 1, Part 2	No applicable requirements	No applicable requirements	No applicable requirements	No applicable requirements	No applicable requirements	No applicable requirements
(V) Bedding components	No applicable requirements	No applicable requirements	No applicable requirements	No applicable requirements	Annex 1, Part 9	No applicable requirements - see note (19)	No applicable requirements	No applicable requirements	No applicable requirements	No applicable requirements	No applicable requirements	Annex 1, Part 9 see note (12)
(W) Light fixtures	in general no certification required, but to be looked at on a case by case basis, in particular when at ceiling or fixed to bulkhead											
(X) Waste receptacles	Non-combustible	Not allowed	Not allowed	Non-combustible	Non-combustible	Non-combustible	Non-combustible	Non-combustible	Non-combustible	Non-combustible	Non-combustible	Non-combustible
(Y) Object d'art, planters, paintwork (NEVER TO REDUCE ESCAPE WIDTHS)	see note (10)	see note (10)	see note (10)	No applicable requirements	No applicable requirements	No applicable requirements	see note (10)	No applicable requirements	see note (9)	Not allowed	Not allowed	No applicable requirements



- note(1):** The window boxes to have a non-combustible structure, additionally, although no specific fire testing standard has been yet developed, however a test as for B-16 divisions, as referred to in 2010 FTP Code, Annex 1, Part 1 (IMO Res. A.754 (18) 2.3.3) is recommended when used in cabins.
- note(2):** Furniture in stairway enclosures shall be limited by surface B, shall be fixed, limited to six seats on each deck in each stairway enclosure, of restricted fire risk, and shall not restrict the passenger escape route.
- note(3):** In such spaces, including reception areas for hospital, beauty & treatment areas etc, which are used as escape routes, the furniture to be fixed, not restricting the escape route and of restricted fire risk, with no facility for storage, and floor coverings should meet low flame spread and smoke & toxicity requirements.
- note(4):** Small amount of surfaces should also be included in the fire volume calculations.
- note(5):** Reference can be made to IACS UR 5C109. However, waste receptacles may be constructed of combustible materials where located in galleys, pantries, bars, garbage handling or storage spaces and incinerator rooms, provided they are intended purely to the carriage of wet waste, glass bottles and metallics and are clearly marked.
- note(6):** These items are to be constructed entirely of approved non-combustible materials, except that a combustible veneer not exceeding 2 mm may be used on the working surface of such articles.
- note(7):** These items are to be constructed with frames of non-combustible materials.
- note(8):** Such spaces were not originally meant to be certified as accommodation spaces and fire volume calculations were in fact not required. Should they be constructed as such they should be treated as spaces of restricted fire risk (cat. 6).
- note(9):** Applicable to paints, varnishes and other finishes (Reg. 8-2/6.2.1)
- note(10):** To be kept to a minimum, be fixed and recommended to be made of non-combustible materials, but to have the reaction (if any) properties which are discussed and agreed on a case by case basis, together with the intended fire administration.
- note(11):** Except for natural hard wood decking systems. For open decks exposed cabin balconies please also consider the requirements in MSC/Circ. 1274.
- note(12):** Furniture and furnishings on cabin balconies shall comply with SOLAS 102-40, 1.3.40, 2.3.40.2, 2.40 & 3.40.7 when balconies are protected by a fixed water spraying and fixed fire detection and alarm systems.
- note(13):** SOLAS 2 Reg. 0-6 defines enclosed pool area as category 0, however if the outfitting (furniture) is not of restricted fire risk then it becomes category 0. Please also refer to USCG MSC Guidelines for review of retractable roof (Magdome).
- note(14):** Wooden floor may be allowed in parlour area as such as stage, dance floor etc., provided the wood is treated with a certified varnish.
- note(15):** Wooden floor may be accepted provided the wood is treated with a certified varnish and the substrate (i.e. primary deck covering) is meeting the requirements set in the corresponding cell.
- note(16):** Primary deck covering and floor coverings are to be considered as defined by 2010 FTP Code Annex 1 Part 5 par. 42
- note(17):** For floating floor the same principles apply. Ground and support shall be non-combustible. Anti-damping treatments in rubber may be installed (to be kept to a minimum) in accommodation and public spaces but shall be steel-encapsulated in escape corridors and stairway enclosure
- note(18):** Include lining, ceilings and partial bulk heads or decks used to screen or to separate adjacent cabin balconies in accordance with SOLAS II-2/3.1.3.2
- note(19):** Publicspace having a deck area of 50m² or more being categorized as cat. 7 space should contain furniture and furnishing of restricted fire risk and certified (Annex 1 Part 2 and Part 5) floor covering

Description

Description	2010 FTP code	Test Procedures
Non-combustibility test	Annex 1, Part 1	ISO 1182, Reaction to fire tests for building and transport products – Non-combustibility test
Smoke and toxicity test	Annex 1, Part 2	ISO 5659-2, Plastics – Smoke generation, Part 2. Determination of optical density by a single chamber test
A, *B* & *F* class divisions	Annex 1, Part 3	ISO 834-1 – Fire-resistance tests – Elements of building construction – Part 1: General requirements
Test for fire door control systems	Annex 1, Part 4	
Test for surface flammability	Annex 1, Part 5	ISO 5659-2, Plastics – Smoke generation, Part 2. Determination of optical density by a single chamber test
Test for primary deck covering	Annex 1, Part 5	ISO 5659-2, Plastics – Smoke generation, Part 2. Determination of optical density by a single chamber test
Test for vertically supported textiles	Annex 1, Part 7	
Test for upholstered furniture	Annex 1, Part 8	
Test for bedding components	Annex 1, Part 9	
Determination of calorific potential	SOLAS II-2/3.2.2 (ISO/DIS 1716)	

Reference also to be made to the 2010 FTP Code Chapter 0 Period of Grace for Type Approval issued in accordance with the previous FTP Code.



FTP Requirements



Type of Space (the types of spaces listed may not be exhaustive)	Control Stations	Stairway Enclosures	Corridors	Public spaces used as internal muster stations	Cabins, Offices (spaces of minor fire risk)	Cabins, Offices (spaces of moderate fire risk) & Public Space
Category of space	1	2	3	4 & 8	6	7
Material	1	2	3	4 & 8	6	7
(A) Floor coverings (see note 16 & 17)	Annex 1, Part 2 see note (14)	Annex 1, Part 5 Annex 1, Part 2	Annex 1, Part 5 Annex 1, Part 2	Annex 1, Part 2 see note (14)	Annex 1, Part 5 Annex 1, Part 2	No applicable requirements see note (15) (19)
(B) Primary deck coverings (see note 16 & 17)	Annex 1, Part 5 Annex 1, Part 2	Annex 1, Part 5 Annex 1, Part 2	Annex 1, Part 5 Annex 1, Part 2	Annex 1, Part 5 Annex 1, Part 2	Annex 1, Part 5 Annex 1, Part 2	Annex 1, Part 5 Annex 1, Part 2
(C) Exposed surfaces of walls and ceiling linings, including paints, varnishes, fabrics & veneers	Annex 1, Part 5 Annex 1, Part 2 (Fire volume calc.) see note (8)	Annex 1, Part 5 Annex 1, Part 2 (Fire volume calc.)	Annex 1, Part 5 Annex 1, Part 2 (Fire volume calc.)	Annex 1, Part 5 Annex 1, Part 2 (Fire volume calc.)	Annex 1, Part 5 Annex 1, Part 2 (Fire volume calc.)	Annex 1, Part 5 Annex 1, Part 2 (Fire volume calc.)
(D) Skirting Board	(Fire volume calc.) see note (8)	(Fire volume calc.)	(Fire volume calc.)	(Fire volume calc.)	(Fire volume calc.)	(Fire volume calc.)
(E) Combustible facings, mouldings, decorations	Annex 1, Part 5 (Fire volume calc.) see notes (8) & (9)	Annex 1, Part 5 (Fire volume calc.) see note (9)	Annex 1, Part 5 (Fire volume calc.) see note (9)	Annex 1, Part 5 (Fire volume calc.) see note (9)	Annex 1, Part 5 (Fire volume calc.) see note (9)	Annex 1, Part 5 (Fire volume calc.) see note (9)
(F) Partial Bulkhead	Annex 1, Part 1	Annex 1, Part 1	Annex 1, Part 1	Annex 1, Part 1	Annex 1, Part 1	Annex 1, Part 1
(G) Wall panel & lining	Annex 1, Part 1	Annex 1, Part 1	Annex 1, Part 1	Annex 1, Part 1	Annex 1, Part 1	Annex 1, Part 1
(H) Panel surface	Annex 1, Part 5 Annex 1, Part 2 (Fire volume calc.) see note (8)	Annex 1, Part 5 Annex 1, Part 2 (Fire volume calc.)	Annex 1, Part 5 Annex 1, Part 2 (Fire volume calc.)	Annex 1, Part 5 Annex 1, Part 2 (Fire volume calc.)	Annex 1, Part 5 Annex 1, Part 2 (Fire volume calc.)	Annex 1, Part 5 Annex 1, Part 2 (Fire volume calc.)
(I) Concealed panel surface	Annex 1, Part 5	Annex 1, Part 5	Annex 1, Part 5	Annex 1, Part 5	Annex 1, Part 5	Annex 1, Part 5
(J) Draught stops	Annex 1, Part 1	Annex 1, Part 1	Annex 1, Part 1	Annex 1, Part 1	Annex 1, Part 1	Annex 1, Part 1
(K) Grounds & supports	Annex 1, Part 1	Annex 1, Part 1	Annex 1, Part 1	Annex 1, Part 1	Annex 1, Part 1	Annex 1, Part 1
(L) Insulation	Annex 1, Part 1	Annex 1, Part 1	Annex 1, Part 1	Annex 1, Part 1	Annex 1, Part 1	Annex 1, Part 1
(M) Insulation surface	Annex 1, Part 5	Annex 1, Part 5	Annex 1, Part 5	Annex 1, Part 5	Annex 1, Part 5	Annex 1, Part 5

So, What Requires IMO Type Approval ?



Following steps are required.

- Testing to the appropriate requirements using the 2010 FTP Code with satisfactory results.
- Technical review of the product specifications and fire test report to verify that product is in compliance with SOLAS.
- Production Quality Assessment (PQA) to ensure consistency of product.
 - Issue of Draft Type Approval Certificate, Module B (MED, UKCA)
 - Certificate is valid for 5 Years and Requires another PQA between 2nd and 3rd year.
 - Module B Certificates require either RO to attend and issue Decollation of Conformity or Module D or E (which requires annual Audits from RO), so that Manufacture can issue the Decollation of Conformity.

Sustainability and Future.



- Carpets are routinely replaced during a cruise ships Life this typically ends up in the land fill.
- When refits are taking place on vessels old interiors are replaced with new interior themed spaces.
- Vessels when being built or refitted/upgraded need to take into account the sustainability of the products which go into the vessels.
- New ECO notations being developed are to lessen the impact on the environment that these vessels have from New Construction, operation to recycling.
- New Materials and products will be needed to meet these challenges.
- Decarbonisation is not just about the Fuel.

Changes in the Industry which LR Support for Sustainability



Sustainable Materials

- Use of recycled, recyclable, and bio-based materials (e.g. recycled aluminum, FSC-certified wood)
- Low-VOC paints, adhesives, and finishes to improve indoor air quality

Design for Circularity

- Modular interiors that allow easy repair, refurbishment, and reuse
- Long-life components designed to reduce refits and waste over the ship's lifecycle

Eco-Efficient Manufacturing

- Reduced water and energy use in production
- Localized or regional manufacturing to cut transportation emissions

Lightweight & Energy-Saving Solutions

- Lightweight furniture and panels to reduce fuel consumption
- Integration of LED lighting and smart interior systems to lower energy demand

Responsible Sourcing & Compliance

- Alignment with maritime environmental regulations and cruise line sustainability goals
- Supplier audits, environmental certifications, and transparent supply chains

End-of-Life Consideration

- Materials selected for recyclability or safe disposal
- Take-back programs and waste reduction strategies during refits





Thank you

Graeme Hyde

T +1 215 385 0301

E

Graeme.hyde@lr.org

Example map

